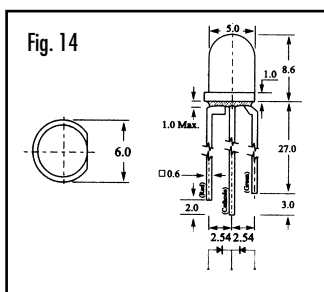
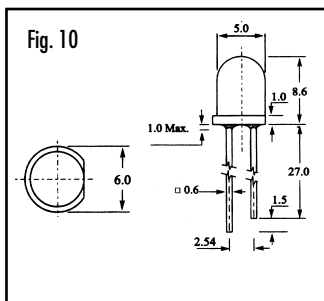
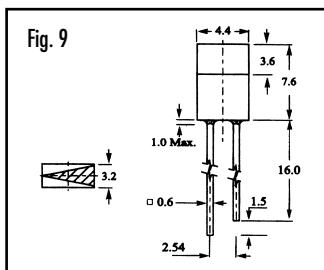
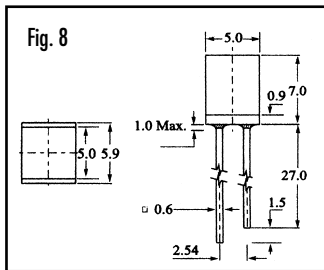
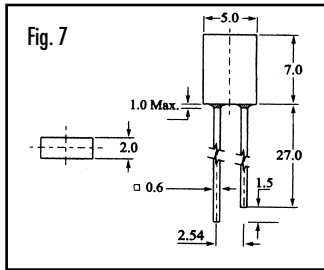
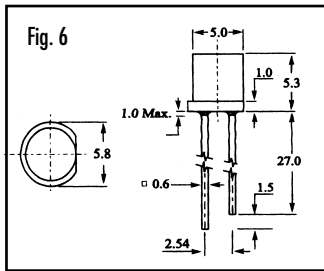




## SERIE GB - LAMPADE LED

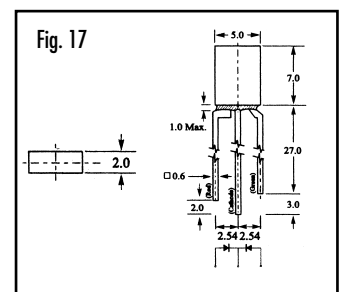
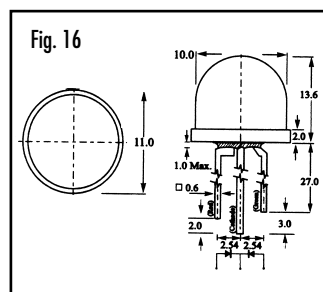
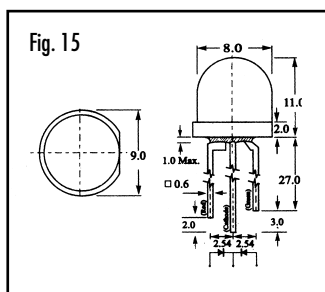
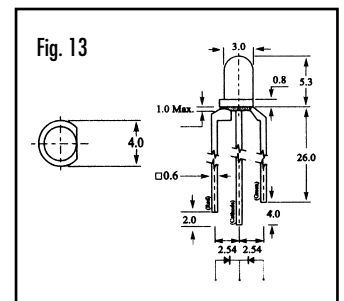
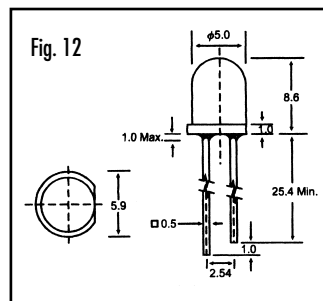
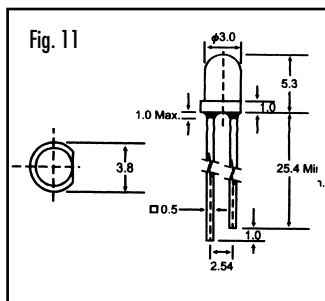
Confezione minima: 100 pezzi per tipo



Tipo	Diámetro mm	Colore	Lunghezza onda ( nm	VF (V) min max	IF (ma)	Iv (mcd) min typ	Angolo osservazione 201/2 (Deg)	Figura	Ref.
<b>LED CILINDRICI AD ALTA LUMINOSITA'</b>									
GB224RTSC	3	rosso trasp.	635	2.0 2.8	10-20	2100.0 3000.0	18	11	1-060-200
GB224PG2C	3	verde trasp.	525	2.8 4.5	10-20	2000.0 3000.0	18	11	1-060-202
GB224YTSC	3	giallo trasp.	590	2.0 2.8	10-20	2100.0 3000.0	18	11	1-060-204
GB224B472C	3	blu trasp.	470	2.8 4.5	10-20	850.0 1200.0	18	11	1-060-206
GB224W2C	3	bianco trasp.	-	3.0 4.5	10-20	1400.0 2000.0	18	11	1-060-208
GB333RTSC	5	rosso trasp.	635	2.0 2.8	20	3800.0 4200.0	16	12	1-060-220
GB333PG2C	5	verde trasp.	525	2.8 4.5	20	3000.0 5000.0	16	12	1-060-222
GB333YTSC	5	giallo trasp.	590	2.0 2.8	20	3600.0 4800.0	16	12	1-060-224
GB333B472C	5	blu trasp.	470	2.8 4.5	20	1750.0 2800.0	16	12	1-060-226
GB333W2C	5	bianco trasp.	-	3.0 4.5	20	3000.0 5000.0	16	12	1-060-228

<b>LED CILINDRICI BICOLORE</b>									
GB229HGW	3	rosso	697	1.7 2.8	10-20	0.5 1.4	54	13	1-060-240
		verde	565	1.7 2.8	10-20	1.1 4.5	54		
GB229YGW	3	giallo	585	1.7 2.8	10-20	0.3 0.8	54	13	1-060-242
		verde	565	1.7 2.8	10-20	1.1 4.5	54		
GB339HGW	5	rosso	697	1.7 2.8	10-20	0.6 1.8	54	14	1-060-244
		verde	565	1.7 2.8	10-20	3.6 7.0	54		
GB339YGW	5	giallo	585	1.7 2.8	10-20	0.4 1.0	54	14	1-060-246
		verde	565	1.7 2.8	10-20	3.6 7.0	54		
GB809HGW	8	rosso	697	1.7 2.8	10-20	0.5 1.8	54	15	1-060-248
		verde	565	1.7 2.8	10-20	3.2 6.5	54		
GB809YGW	8	giallo	585	1.7 2.8	10-20	0.3 0.8	54	15	1-060-250
		verde	565	1.7 2.8	10-20	3.2 6.5	54		
GB1009HGW	10	rosso	697	1.7 2.8	10-20	0.4 1.1	54	16	1-060-252
		verde	565	1.7 2.8	10-20	0.9 1.8	54		
GB1009YGW	10	giallo	585	1.7 2.8	10-20	0.3 0.7	54	16	1-060-254
		verde	565	1.7 2.8	10-20	0.7 1.8	54		

<b>LED RETANGOLARI BICOLORE</b>									
GB529HGW	2x5	rosso	697	1.7 2.8	10-20	0.4 0.9	120	17	1-060-256
		verde	565	1.7 2.8	10-20	0.7 2.8	120		
GB529YGW	2x5	giallo	585	1.7 2.8	10-20	0.3 0.8	120	17	1-060-258
		verde	565	1.7 2.8	10-20	0.7 2.8	120		

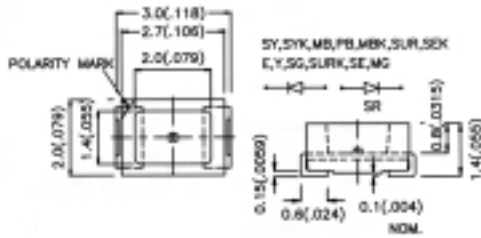


**Kingbright**

**SMD SURFACE MOUNT LED LAMPS**  
 Confezione minima: 50 pezzi per tipo

Tipo	Colore	Lunghezza onda di picco (nm)	Intensità nom. Iv (mcd) @ 20 mA	Angolo osservazione 201/2	Ref.
------	--------	------------------------------	---------------------------------	---------------------------	------

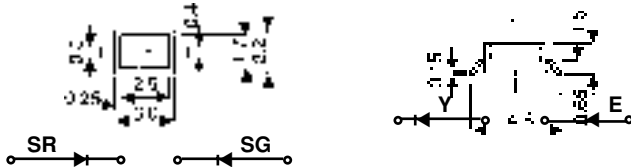
**SERIE KA 3020 - 3 x 2 mm (1208)**



KA3020EC	rosso trasparente	625	8 40	90°	1-057-420
KA3020SGC	verde trasparente	565	8 30	90°	1-057-422
KA3020YC	giallo trasparente	590	8 20	90°	1-057-424
KA3020SRC	s/rosso trasparente	660	70 150	90°	1-057-426
KA3020MBC*	blu trasparente	430	3 15	90°	1-057-428
KA3020PWC	bianco trasparente	-	70 125	90°	1-057-429

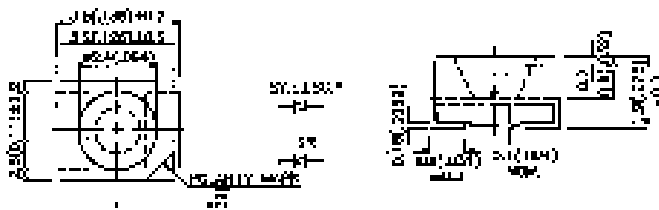
\* - confezione minima: 10 pezzi

**SERIE KA 3022 - 3.5 x 2.2 mm**



KA3022EC	rosso trasparente	625	8 40	90°	1-057-430
KA3022SGC	verde trasparente	565	8 30	90°	1-057-432
KA3022YC	giallo trasparente	590	5 20	90°	1-057-434
KA3022SRC	s/rosso trasparente	660	70 150	90°	1-057-436

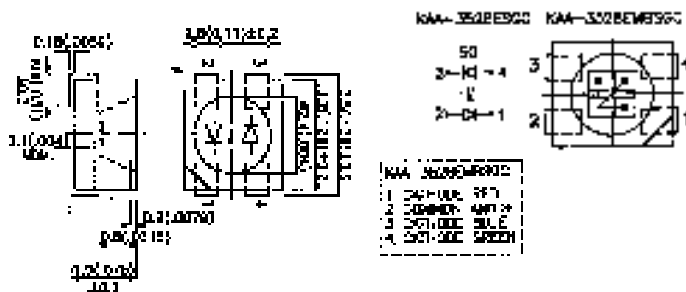
**SERIE KA 3528 - 3 x 2.8 mm**



KA3528IT	rosso trasparente	625	12 30	120°	1-057-200
KA3528SGT	verde trasparente	565	12 30	120°	1-057-202
KA3528YT	giallo trasparente	590	8 15	120°	1-057-206
KA3528SRT	s/rosso trasparente	660	70 150	120°	1-057-208
KA3528MBC*	blu trasparente	430	5 20	120°	1-057-209
KA3528PWC	bianco trasparente	-	70 150	120°	1-057-211

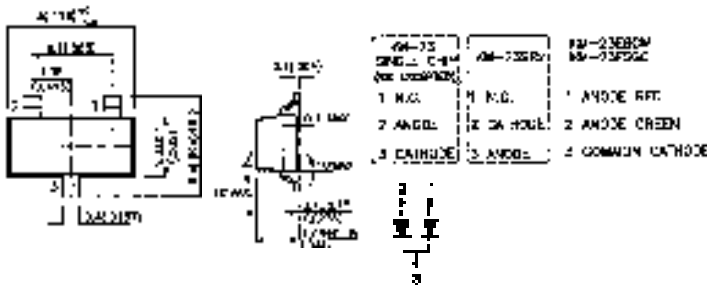
\* - confezione minima: 10 pezzi

**SERIE KA 3528 - 3.5 x 2.8 mm - BICOLORE /TRICOLORE**



KAA3528SGT	rosso trasparente	625	12 30	120°	1-057-210
Bicolore	verde trasparente	565	12 30	120°	
KAA3528SGT	rosso trasparente	625	12 30	120°	1-057-212
EMBSGC	verde trasparente	565	12 30	120°	
Tricolore	blu trasparente	430	5 30	120°	

**SERIE KM23 - 3 x 1.3 mm (SOT-23)**



KM23HD	rosso diffuso	700	12 30	140°	1-057-220
KM23SGD	verde diffuso	565	12 30	140°	1-057-222
KM23YD	giallo diffuso	590	8 15	140°	1-057-224
KM23SRD	s/rosso diffuso	660	70 150	140°	1-057-226
KM23ESGW	rosso diffuso	625	70 150	140°	1-057-228
Bicolore	verde diffuso	565	5 15	140°	

**SERIE KM2520 - 2 x 2.5 mm**



KM2520ID01	rosso diffuso	625	8 30	60°	1-057-230
KM2520SGD01	verde diffuso	565	3 10	60°	1-057-232
KM2520YD01	giallo diffuso	590	3 10	60°	1-057-234
KM2520SRD01	s/rosso diffuso	660	50 150	60°	1-057-236
KM2520MBC01*	blu trasparente	430	30 60	60°	1-057-238

\* - confezione minima: 10 pezzi

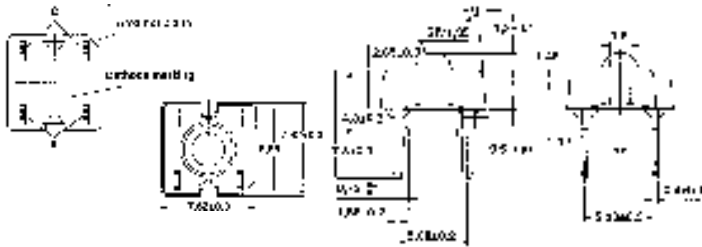


## Kingbright LED INDICATOR LAMPS

Confezione minima: 100 pezzi per tipo

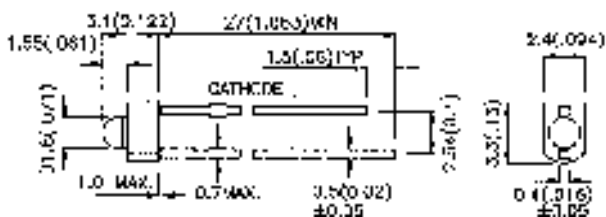
Tipo	Colore	Lunghezza onda di picco	λv/min@ min.-max	IF/mA	VF/V	Ref.
------	--------	-------------------------	------------------	-------	------	------

### SERIE TELUX™ LEDS 7.62 mm



TLWR 7600	rosso	624	1500-3000	70	2.2 - 2.7	1-057-440
TLWY 7600	verde	594	1000-2400	70	2.1 - 2.7	1-057-442
TLWTG 7600	giallo	518	630-1800	50	4.2 - 4.7	1-057-444
TLWB 7600	blu	460	200-630	50	4.3 - 4.7	1-057-446
TLWW 7600	bianco	5500K	400-1250	50	4.3 - 5.1	1-057-448

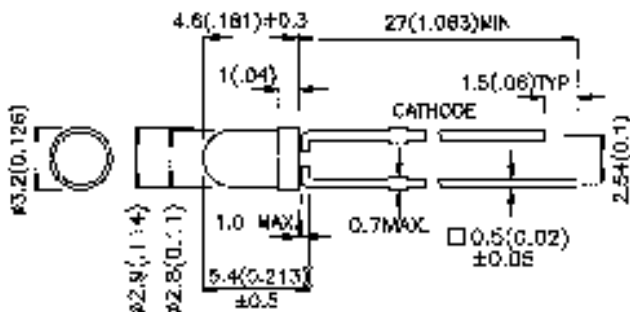
### SERIE L1060 - Ø 1.8mm



Tipo	Colore	Lunghezza onda di picco (nm)	Intensità nom. Iv (mcd) @ 20 mA	Angolo osservazione 201/2	Ref.
------	--------	------------------------------	---------------------------------	---------------------------	------

L1060ID	rosso diffuso	625	0.8	15	70°	1-057-496
L1060GD	verde diffuso	565	5	10	70°	1-057-497
L1060YD	giallo diffuso	590	5	8	70°	1-057-498
L1060SRD	s/rosso diffuso	640	70	200	70°	1-057-499

### SERIE L934 - Ø 3mm - Confezione minima 100 pz.



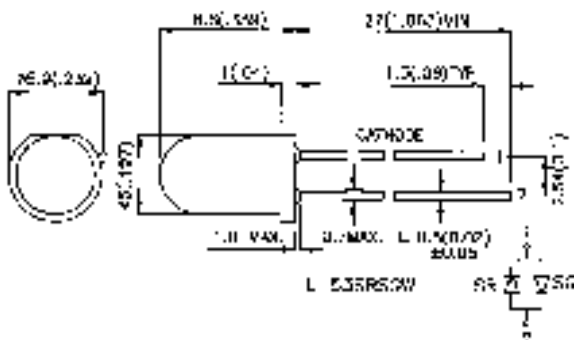
L934ID	rosso diffuso	625	8	25	60°	1-057-500
L934GD	verde diffuso	568	8	20	60°	1-057-502
L934YD	giallo diffuso	588	5	15	60°	1-057-505
L934MBD*	blu diffuso	455	20	50	60°	1-057-507
L934ND	arancio diffuso	610	8	30	60°	1-057-504
L934MWC*	bianco trasparente	-	50	180	40°	1-057-508
L934PWC*	bianco trasparente	-	200	600	35°	1-057-509

\* - confezione minima: 25 pezzi

### SERIE L934 AD ALTA EFFICIENZA - Ø 3mm - Confezione minima 50 pz.

L934SRC-B	rosso trasparente	660	250	360	50°	1-057-450
L934SGD-B	verde trasparente	565	80	150	50°	1-057-452
L934SYC-B	giallo trasparente	595	200	700	50°	1-057-454
L934MGC	verde trasparente	570	200	700	50°	1-057-445
L934MGJ	verde trasparente	570	300	1000	35°	1-057-446
L934VGC-E	verde trasparente	525	1500	2000	50°	1-057-447
L934SGD	verde diffuso	568	20	40	60°	1-057-449

### SERIE L53 - Ø 5mm



L53ID	rosso diffuso	625	8	25	60°	1-057-510
L53GD	verde diffuso	568	5	20	60°	1-057-512
L53YD	giallo diffuso	588	5	20	60°	1-057-515
L53MBD	blu diffuso	455	40	60	60°	1-057-517
L53ND	arancio diffuso	610	12	30	60°	1-057-514
L53MWC*	bianco trasparente	-	80	200	30°	1-057-518
L53PWC*	bianco trasparente	-	500	1000	20°	1-057-519

\* - confezione minima: 25 pezzi

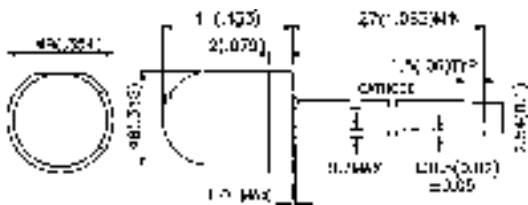
### SERIE L53 AD ALTA EFFICIENZA - Ø 5mm

L53SRC-C	rosso trasparente	660	500	1000	30°	1-057-456
L53SGC-B	verde trasparente	565	100	200	30°	1-057-457
LL53SYC-B	giallo trasparente	595	400	1000	30°	1-057-458
L53SRC-E	rosso trasparente	640	1600	1800	30°	1-057-459

**Kingbright LED INDICATOR LAMPS**

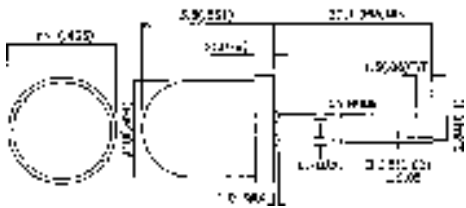
Tipo	Colore (trasparente)	Lunghezza onda di picco (nm)	Intensità nom. IV (mcd) @ 20 mA min. max	Angolo osservazione 201/2	Ref.
------	-------------------------	---------------------------------	--	------------------------------	------

**SERIE L793 - Ø 8mm - Confezione minima: 50 pz. per tipo**



L793ID	rosso diffuso	625	40	100	60°	1-057-520
L793GD	verde diffuso	565	20	60	60°	1-057-522
L793YD	giallo diffuso	590	20	50	60°	1-057-525
L793SRD-B*	s/rosso diffuso	660	120	200	60°	1-057-527
L793ED	arancio diffuso	625	40	100	60°	1-057-524
L793SRC-C	rosso trasparente	640	1000	1500	40°	1-057-526
L793SRC-E	rosso trasparente	640	2000	2800	40°	1-057-528

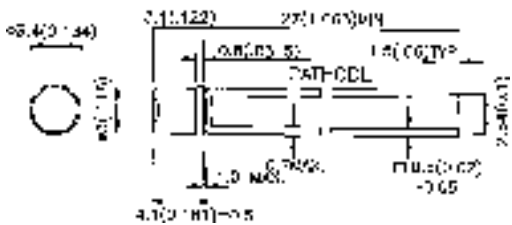
**SERIE L813ID - Ø 10mm - Confezione minima: 50 pz. per tipo**



L813ID	rosso diffuso	625	40	100	60°	1-057-530
L813GD	verde diffuso	565	20	60	60°	1-057-532
L813YD	giallo diffuso	590	20	50	60°	1-057-535
L813SRDB*	s/rosso diffuso	660	120	200	60°	1-057-531
L813ED	arancio diffuso	625	40	100	60°	1-057-533
L813SRC-C	bianco trasparente	640	1000	1500	40°	1-057-534
L813SRC-E	bianco trasparente	640	2000	2800	40°	1-057-536

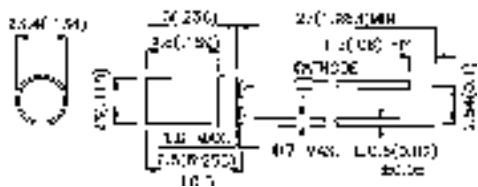
\* Confezione minima: 25 pezzi

**SERIE L1334 CYLINDRICAL LED LAMPS - Ø 3mm - Confezione minima: 100 pz. per tipo**



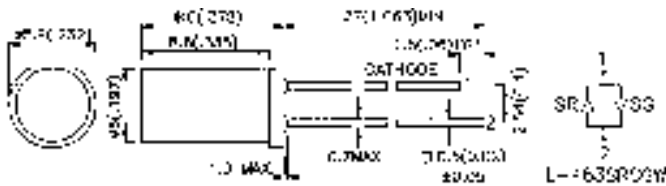
L1334IT	rosso trasparente	625	3	5	130°	1-057-730
L1334GT	verde trasparente	565	3	8	130°	1-057-732
L1334YT	giallo trasparente	590	1.2	3	130°	1-057-734
L1334NT	arancio trasparente	610	3.2	8	130°	1-057-736
L1334SRT	s/rosso trasparente	660	20	60	130°	1-057-738
L1334SGT	s/verde trasparente	565	5	10	130°	1-057-740

**SERIE L424 CYLINDRICAL LED LAMPS - Ø 3mm - Confezione minima: 100 pz. per tipo**



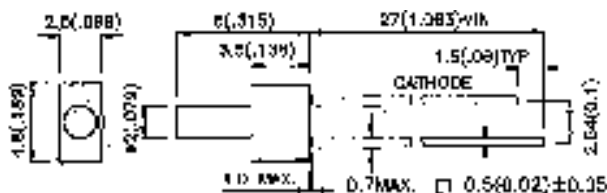
L424HDT	rosso diffuso	700	0.5	1	100°	1-057-556
L424GDT	verde diffuso	565	1.3	4	100°	1-057-557
L424YDT	giallo diffuso	590	1.3	4	100°	1-057-558

**SERIE L483 CYLINDRICAL LED LAMPS - Ø 5mm - Confezione minima: 100 pz. per tipo**



L483HDT	rosso diffuso	700	0.5	1	100°	1-057-550
L483GDT	verde diffuso	565	1.3	4	100°	1-057-552
L483YDT	giallo diffuso	590	1.3	4	100°	1-057-555

**SERIE L13 FLAT TOP LED LAMPS - Ø 2mm - Confezione minima: 100 pz. per tipo**



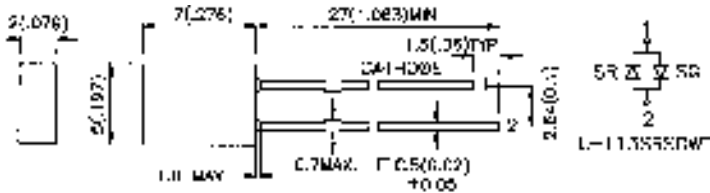
L13HDT	rosso diffuso	660	0.5	1	70°	1-057-700
L13GDT	verde diffuso	568	3	10	70°	1-057-702
L13YDT	giallo diffuso	588	3	8	70°	1-057-704

## Kingbright LED INDICATOR LAMPS

Confezione minima: 100 pezzi per tipo

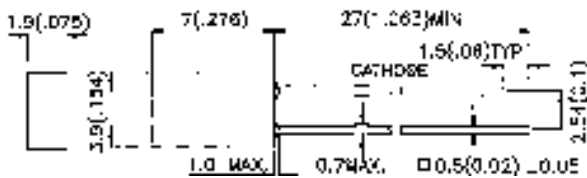
Tipo	Colore	Lunghezza onda di picco (nm)	Intensità nom. min.	Intensità nom. max	Angolo osservazione 201/2	Ref.
------	--------	------------------------------	---------------------	--------------------	---------------------------	------

### SERIE L113 - RECTANGULAR LED INDICATOR LAMPS 2 x 5 mm



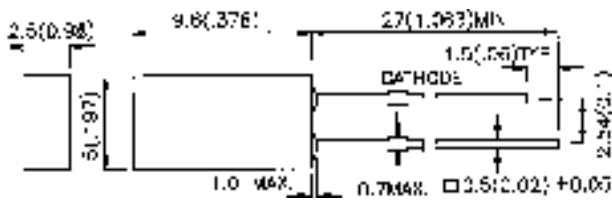
L113HDT	rosso diffuso	660	0.5	1	110°	1-057-560
L113GDT	verde diffuso	568	2	5	110°	1-057-562
L113YDT	giallo diffuso	590	2	4	110°	1-057-565
L113EDT	arancio diffuso	625	3	5	110°	1-057-564

### SERIE L144 - RECTANGULAR LED INDICATOR LAMPS 1.9 x 3.9 mm



L144HDT	rosso diffuso	700	0.5	1	110°	1-057-710
L144GDT	verde diffuso	565	2	4	110°	1-057-712
L144YDT	giallo diffuso	590	2	3	110°	1-057-714
L144EDT	arancio diffuso	625	3	6	110°	1-057-716
L144SRDT	s/rosso diffuso	660	40	70	110°	1-057-718

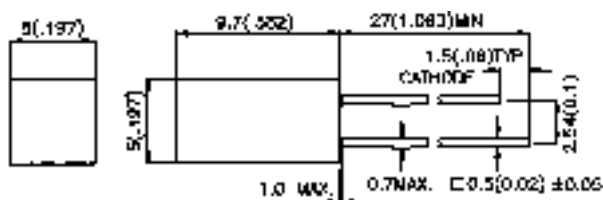
### SERIE L383 - RECTANGULAR LED INDICATOR LAMPS 2.5 x 5 mm



L383HDT	rosso diffuso	700	0.5	1	110°	1-057-566
L383GDT	verde diffuso	565	1.3	4	110°	1-057-568
L383YDT	giallo diffuso	590	1.3	4	110°	1-057-570
L383EDT	arancio diffuso	625	3	5	110°	1-057-569

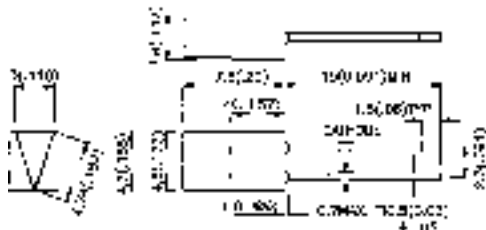
14

### SERIE L1553 - SQUARE LED INDICATOR LAMPS 5 x 5 mm



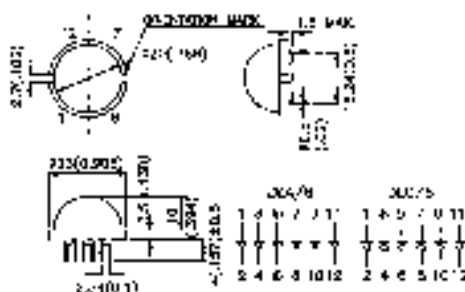
L1553HDT	rosso diffuso	700	0.5	1	110°	1-057-572
L1553GDT	verde diffuso	565	1.3	1	110°	1-057-574
L1553YDT	giallo diffuso	590	1.3	5	110°	1-057-576
L1553EDT	arancio diffuso	625	3	8	110°	1-057-575

### SERIE L362 - TRIANGULAR LED LAMPS 3 x 4.5 mm



L362HD	rosso diffuso	700	0.5	0.8	100°	1-057-720
L362GD	verde diffuso	565	2	3	100°	1-057-722
L362YD	giallo diffuso	590	1.2	2	100°	1-057-724

### SERIE JUMBO - LED LAMPS Ø 20 mm - Confezione minima 44 pezzi



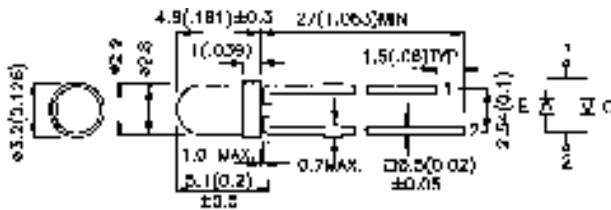
DLA6ID	rosso diffuso	625	12	50	120°	1-057-540
DLA6GD	verde diffuso	565	20	80	120°	1-057-541
DLA6YD	giallo diffuso	590	12	50	120°	1-057-542
DLA6SGD	s/verde diffuso	565	70	200	120°	1-057-543
DLA6SRD	s/rosso diffuso	660	100	400	120°	1-057-544
DLCA6ID	rosso diffuso	625	12	50	120°	1-057-545
DLCA6GD	giallo diffuso	565	20	80	120°	1-057-546
DLCA6YD	verde diffuso	590	12	50	120°	1-057-547
DLCA6SRG	s/verde diffuso	565	70	200	120°	1-057-548
DLCA6SRD	s/rosso diffuso	660	100	400	120°	1-057-549

## KINGBRIGHT - BI-COLOUR & BIPOLAR LED LAMPS

Confezione minima: 50 pezzi per tipo

Tipo	Colore	Lunghezza onda di picco (nm)	Intensità nom. l <sub>v</sub> (mcd) @ 20 mA	Angolo osservazione 201/2	Ref.
			min. max		

### SERIE L937 - 3 mm



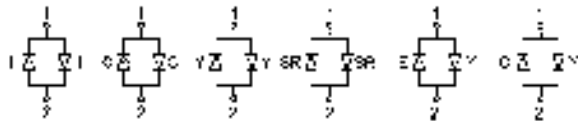
L937EGW	rosso	625	8	20	60°	1-057-593
	verde	568	8	20	60°	
L937EYW	rosso	625	8	20	60°	1-057-594
	giallo	588	5	10	60°	
L937GYW	verde	568	8	20	60°	1-057-595
	giallo	588	5	10	60°	



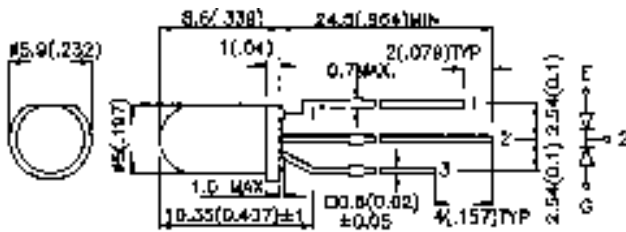
### SERIE L57 - 5 mm



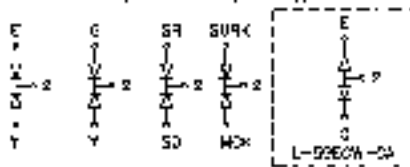
L57EGW	rosso	625	10	30	60°	1-057-596
	verde	568	12	20	60°	
L57EYW	rosso	625	10	30	60°	1-057-597
	giallo	588	5	10	60°	
L57GYW	verde	568	12	20	60°	1-057-598
	giallo	588	5	10	60°	



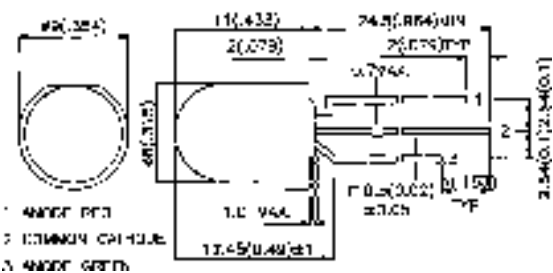
### SERIE L59 - 5 mm



L59EGW	rosso	625	20	60	60°	1-057-600
	verde	588	20	50	60°	
L59EYW	rosso	625	20	60	60°	1-057-602
	giallo	588	20	40	60°	
L59GYW	verde	568	20	50	60°	1-057-604
	giallo	588	20	40	60°	



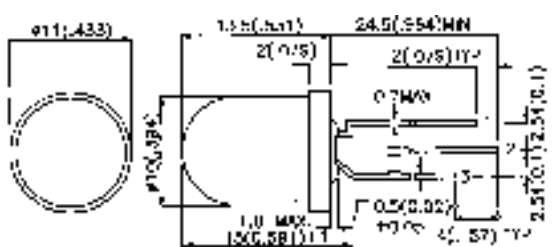
### SERIE L799 - 8 mm - Confezione minima: 10 pz. per tipo



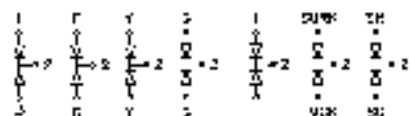
L799EGW	rosso	625	40	80	50°	1-057-630
	verde	568	20	50	50°	
L799EYW	rosso	625	30	90	50°	1-057-631
	giallo	590	20	60	50°	
L799GYW	verde	565	20	60	50°	1-057-632
	giallo	590	20	60	50°	



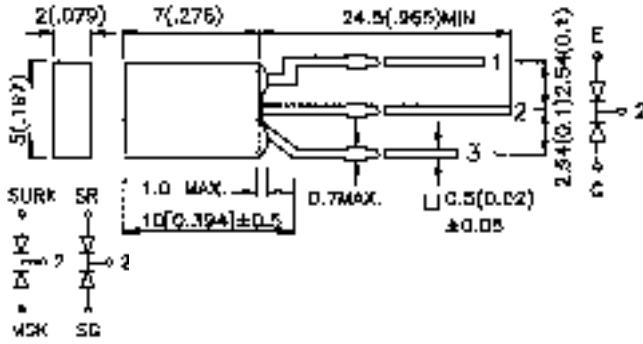
### SERIE L819 - 10 mm - Confezione minima: 10 pz. per tipo



L819EGW	rosso	625	30	80	50°	1-057-635
	verde	568	20	50	50°	
L819EYW	rosso	625	30	90	50°	1-057-636
	giallo	590	20	60	50°	
L819GYW	verde	565	20	60	50°	1-057-637
	giallo	590	20	60	50°	



## SERIE L119 - 2 x 5 mm - Confezione minima: 50 pz. per tipo

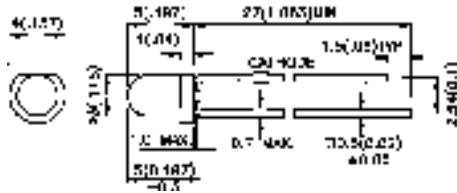


Tipo	Colore	Lunghezza onda di picco (nm)	Intensità nom. Iv (mcd) @ 20 mA	Angolo osservazione 201/2	Ref.
			min. max		
L119EGW	rosso	625	8 20	110°	1-057-590
	verde	588	5 12	110°	
L119EYW	rosso	625	8 20	110°	1-057-591
	giallo	590	5 12	110°	
L119GYW	verde	565	5 20	110°	1-057-592
	giallo	590	5 20	110°	

## Kingbright BLINKING LED LAMPS

Tipo	Colore	Lunghezza onda di picco (nm)	Intensità nom. Iv (mcd) @ 20 mA	Angolo osservazione 201/2	Ref.
			min. max		

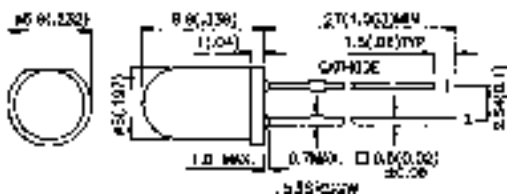
## SERIE L36 - BLINKING LED LAMPS 3 mm - Confezione minima: 10 pz. per tipo



L36BHD	rosso diffuso	660	1.3 2	60°	1-057-612
L36BGD	verde diffuso	568	5 15	60°	1-057-613
L36BYD	giallo diffuso	588	5 10	60°	1-057-614

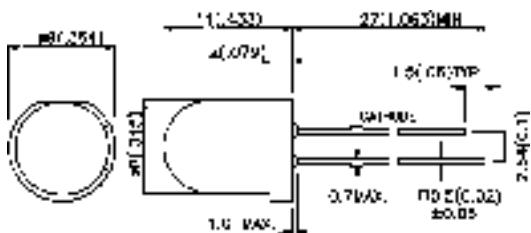
16

## SERIE L56 - BLINKING LED LAMPS 5 mm - Confezione minima: 50 pz. per tipo



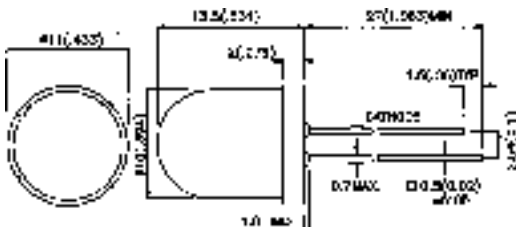
L56BHD	rosso diffuso	660	2 5	60°	1-057-605
L56BSRD-B	s/rosso diffuso	640	100 200	60°	1-057-606
L56BGD	verde diffuso	568	5 20	60°	1-057-607
L56BYD	giallo diffuso	588	5 20	60°	1-057-610

## SERIE L796 - BLINKING LED LAMPS 8 mm - Confezione minima: 10 pz. per tipo



L796BID	rosso diffuso	625	20 60	60°	1-057-616
L796BGD	verde diffuso	568	20 50	60°	1-057-617
L796BYD	giallo diffuso	588	20 40	60°	1-057-618
L796BSRC-B	s/rosso trasparente	640	500 800	40°	1-057-619

## SERIE L816 - BLINKING LED LAMPS 10 mm - Confezione minima: 10 pz. per tipo



L816BID	rosso diffuso	625	20 60	60°	1-057-620
L816BGD	verde diffuso	568	20 50	60°	1-057-621
L816BYD	giallo diffuso	588	20 40	60°	1-057-622
L816BSRC-B	s/rosso trasparente	660	500 800	40°	1-057-623